

EinScan HX

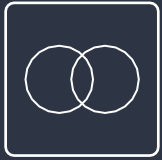
Hybrid Blue Laser & LED Light Source
2 in 1, Handheld 3D Scanner

Laser type 또는 LED type
그것은 더 이상 고민할 필요 없다.



블루 LED 조명과 블루 레이저를 EinScan HX 핸드헬드 3D 스캐너에 혁신적으로 통합.
하이브리드 레이저와 LED 광원은 EinScan HX는 사용자의 다양한 요구 충족

2 in 1



Hybrid Handheld
- Blue Laser
- Blue LED Light

블루 레이저 장점과
블루 구조광 장점을
통합하여 3D스캐너 한계 최소화

Blue Laser Scan 모드



Blue LED Rapid Scan 모드



높은 효율성



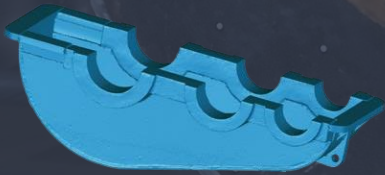
3D스캔 속도

- RAPID(LED) 모드

1,200,000 points/s 20FPS

- LASER 모드

480,000 points/s 55FPS



신뢰성



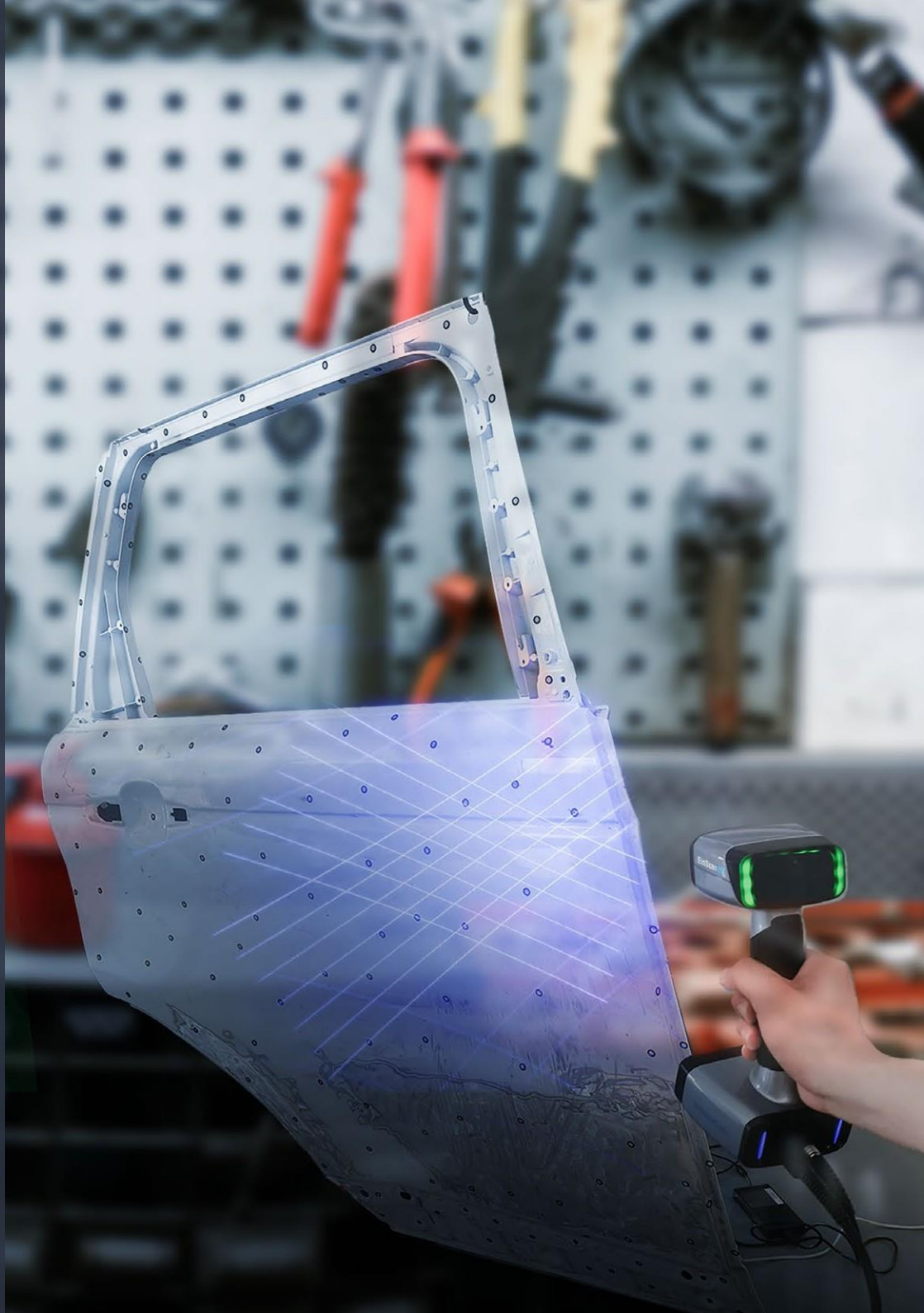
정확도

- RAPID(LED) 모드

스캔 정확도: 최대 0.05mm
볼륨 정확도: 0.05+0.1mm/m

- LASER 모드

스캔 정확도: 최대 0.04mm
볼륨 정확도: 0.04+0.06mm/m





편의성



무게 : 710 g

프로젝트 정렬 기능

메쉬 편집 및 측정 기능

Device
EinScan HX

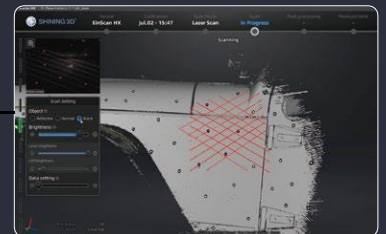
Calibration
Jul.02-15:47

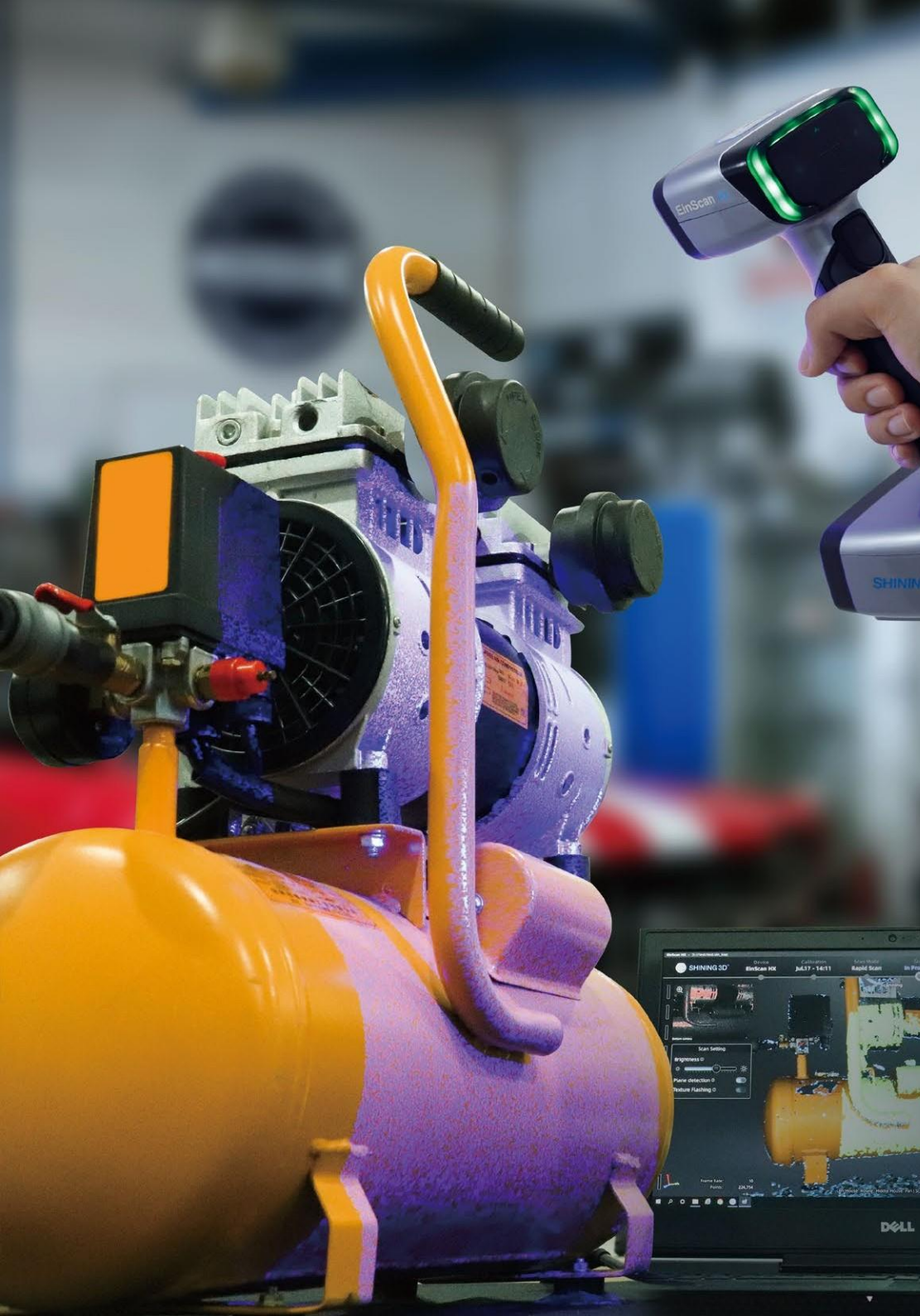
Scan Mode
Laser Scan

Scan
In Progress

Post Processing
-

Measurement
-

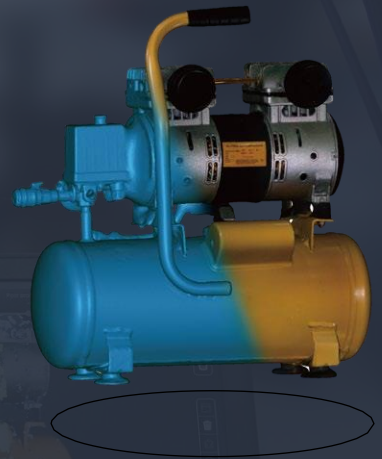




폴 칼라



폴칼라 카메라 내장
RAPID(LED) 모드에서 구현



활용 분야



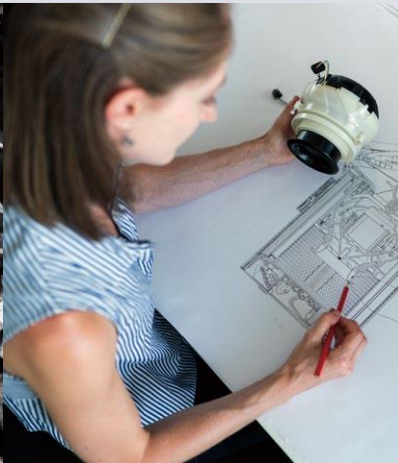
자동차



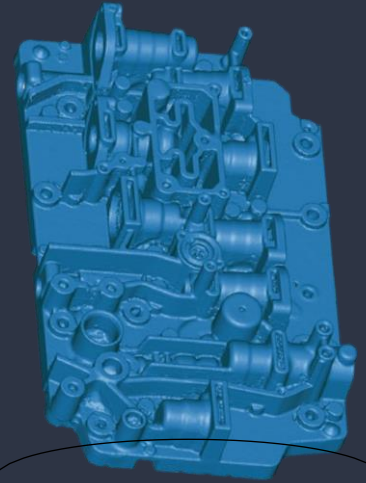
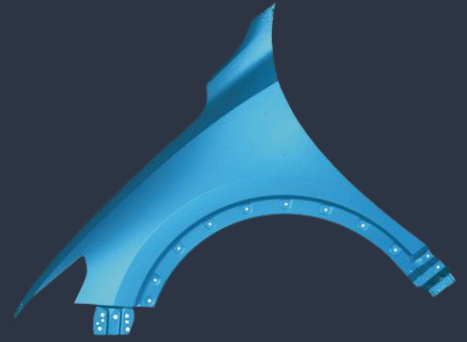
선박



기계



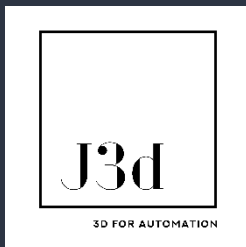
교육 및 연구



EinScan HX TECHNICAL SPECIFICATIONS

Scan Mode	Rapid Scan	Laser Scan
Scan Accuracy	Up to 0.05mm	Up to 0.04mm
Volumetric Accuracy*	0.05+0.1mm/m	0.04+0.06mm/m
Scan Speed	1,200,000 points/s 20FPS	480,000 points/s 55FPS
Camera Frame Rate	55FPS	55FPS
Align Mode	형상, 마커, Texture, Hybrid 정렬	마커 정렬
Working Distance	470mm	470mm
Depth of Field	200mm-700mm	350mm-610mm
Max FOV	420mm*440mm	380mm*400mm
Point Distance	0.25mm - 3mm	0.05mm-3mm
Light Source	Blue LED	7 Blue Laser Crosses
Safety	Eye-safe	Class I (Eye-safe)
Built-in Color Camera	Yes	
Texture Scan	Yes	No
Connection Standard	USB3.0	
Output Formats	OBJ; STL; ASC; PLY; P3; 3MF	
Dimensions	108mmx110mmx237mm	
Weight	710g	
Certifications	CE, FCC, ROHS, WEEE, KC	
Recommended Configuration	OS : Win10, 64 bit ; Graphics card : NVIDIA GTX1080 and higher ; Video memory : ≥4G ; Processor : I7-8700 ; Memory : ≥32GB	

*Volumetric accuracy refers to the relationship between 3D data accuracy and object size; the accuracy is reduced by 0.1mm (rapid scan)/0.06mm (laser scan) per 100cm. The conclusion is obtained by measuring the center of sphere under marker alignment.



제이쓰리디 (J3D, Ltd)

경기도 성남시 중원구 갈마치로 302, 우림라이온스밸리 5차 B동 1412호

TEL : 010-2245-9792

www.einscan.kr